

WE KNOW THESE HILLS BETTER THAN ANYONE



Judge Road Tryon, North Carolina

This 4 bedroom, 3.5 bath home was a custom creation from its conception on Holland Brady's drafting table. It is truly a unique blend of living spaces which flow from one to the other with few walls and doors, except in the private spaces. This technique portrays a larger feel to the home, but keeps the areas of the home intimate yet private and accommodating. Soaring ceilings and walls of windows accomplish light filled rooms. With the great seasonal weather the Thermal Belt moderates the climate around Tryon and its surrounding area and entices the homeowner to entertain outdoors a great deal of the year. The multiple French Doors open out to inviting multiple level decks and pool area.



The kitchen is a wonderful galley style workspace which flows into an oversized pantry containing additional cabinets and double size Sub Zero refrigerator and separate freezer. The center island houses a downdraft cook top and opens more work-space around the sink and dishwasher. It is utilized as a wine rack.

The breakfast nook is just steps from the kitchen and overlooks the patio/decks. Full day of natural light is afforded by the wall of windows which let you feel you're outside with nature while in the comfort of your home.





The family room is very informal with easy access to the kitchen and outdoor living area. The family room has a southwestern feel portrayed from the stucco fireplace, brickwork around the raised hearth and open beamed ceiling.

The dining room is very informal, light filled and offers easy access to the wet bar and living room.



WWE
WALKER-WALLACE
& EMERSON
REALTY



The master bedroom is located on and comprises the entire second level of the home. There is a generous sitting or dressing area with a window seat in which to relax. Tongue and groove wood ceiling enhance the space.

The master bath has both a separate shower and jetted tub. Dual vanity sinks, custom cabinets, full wall of mirrors, skylights and ceramic tile floors.





The guest suites are located on the main and lower levels. They offer spacious sitting and dressing areas along with private full baths. The lower level suite has an attached sitting room with a working fireplace and access to the outdoor pool area.





The grounds are comprised of over 3 acres of private end of the road pleasure and views. Mature landscape and manicured flower beds add color year round to the property. The pool area is enhanced by over 500 square feet of decking and custom water feature.



The Residence

Over 4200 Sq Ft. of contemporary living space on 3 levels
Recently replaced roof with 40 year quality type
Recently upgraded multiple HVAC units
Whole house emergency automatic generator system
Transferable warranty contracts
Seasonal views and privacy
Custom architect designed home
Top of the line windows and doors (double pane)
Emergency whole house generator with 2500 gallon propane tank
Meticulous care and condition of this home is easily seen at viewing

The Interiors

Galley style center island kitchen with expanded pantry
Sun room with breakfast nook
3 Fireplaces
Formal living room
2 separate wet bars
Multiple banks of glass wall to utilize the natural light
3 levels of living accommodations
Lower level guest quarters with private entrance
Some furniture to convey

The Property

3.15 acres of wooded, private sloped land
Mature plants, trees and flower gardens
Cul de Sac with end of the road privacy
Easy access to dining, grocery stores, library, Interstates and Highways, churches and gathering areas.



The Residence

Over 4200 Sq Ft. of contemporary living space on 3 levels
Recently replaced roof with 40 year quality type
Recently upgraded multiple HVAC units
Whole house emergency automatic generator system
Transferable warranty contracts
Seasonal views and privacy
Custom architect designed home
Top of the line windows and doors (double pane)
Emergency whole house generator with 2500 gallon propane tank
Meticulous care and condition of this home is easily seen at viewing

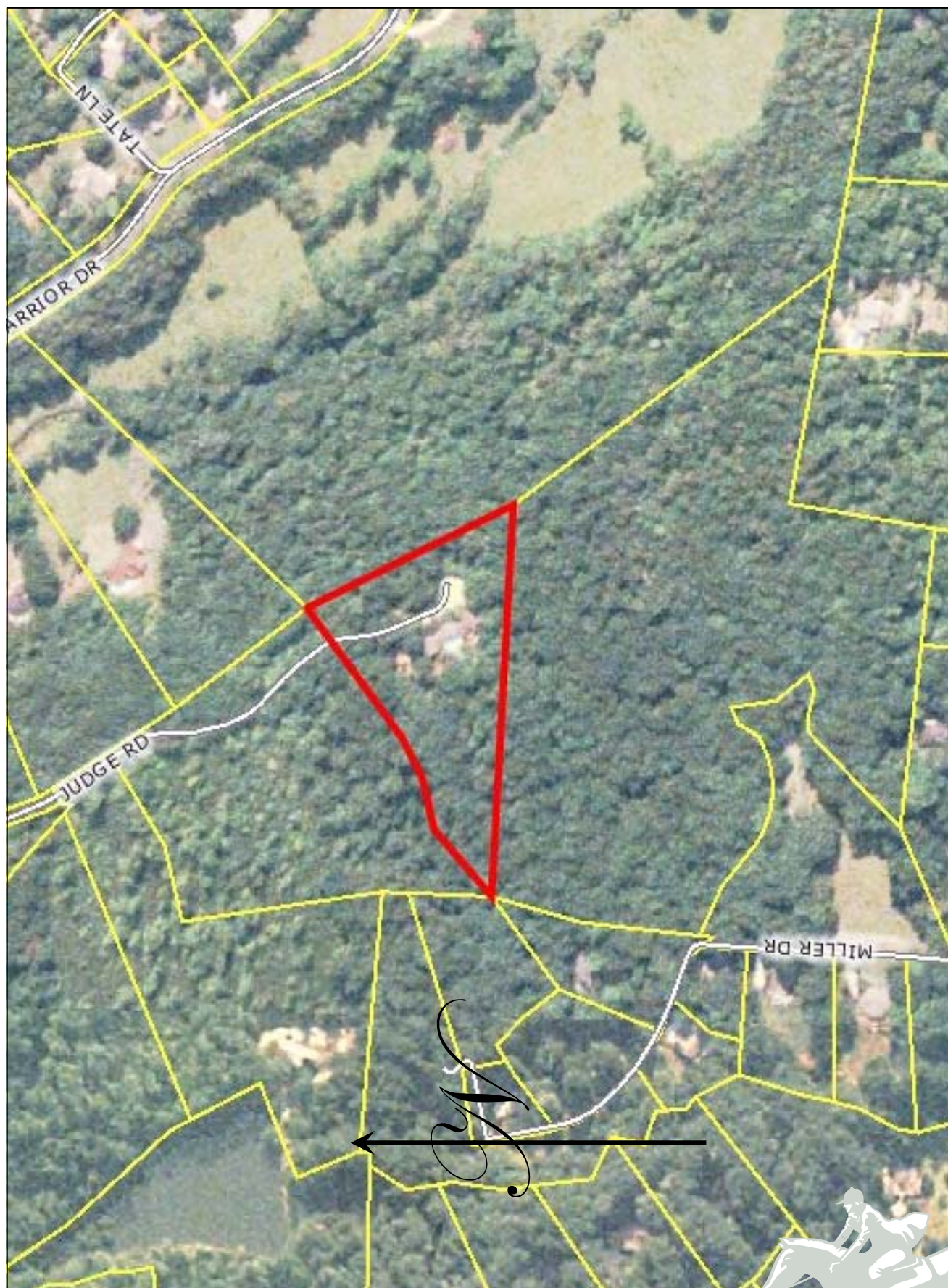
The Interiors

Galley style center island kitchen with expanded pantry
Sun room with breakfast nook
3 Fireplaces
Formal living room
2 separate wet bars
Multiple banks of glass wall to utilize the natural light
3 levels of living accommodations
Lower level guest quarters with private entrance
Some furniture to convey

The Property

3.15 acres of wooded, private sloped land
Mature plants, trees and flower gardens
Cul de Sac with end of the road privacy
Easy access to dining, grocery stores, library, Interstates and Highways, churches and gathering areas.







Offered at \$725,000.

For additional information about

This property

Please contact :

Ron Piccari

828-606-7441

800-442-4749 ext 115

ron.piccari@wweRealty.com



Walker, Wallace & Emerson Realty

400 East Rutherford Street Suite 100

Landrum, South Carolina 29356

Please visit us on the web:

wweRealty.com