


400 E. Rutherford St.
Suite 100
Landrum, SC 29356

WWE
WALKER · WALLACE
& E M E R S O N
R E A L T Y

864-457-2448 800-442-4749
wwwRealty.com
wwe@wweRealty.com

WE KNOW THESE HILLS BETTER THAN ANYONE



*Foxwood Hills
Tryon, North Carolina*

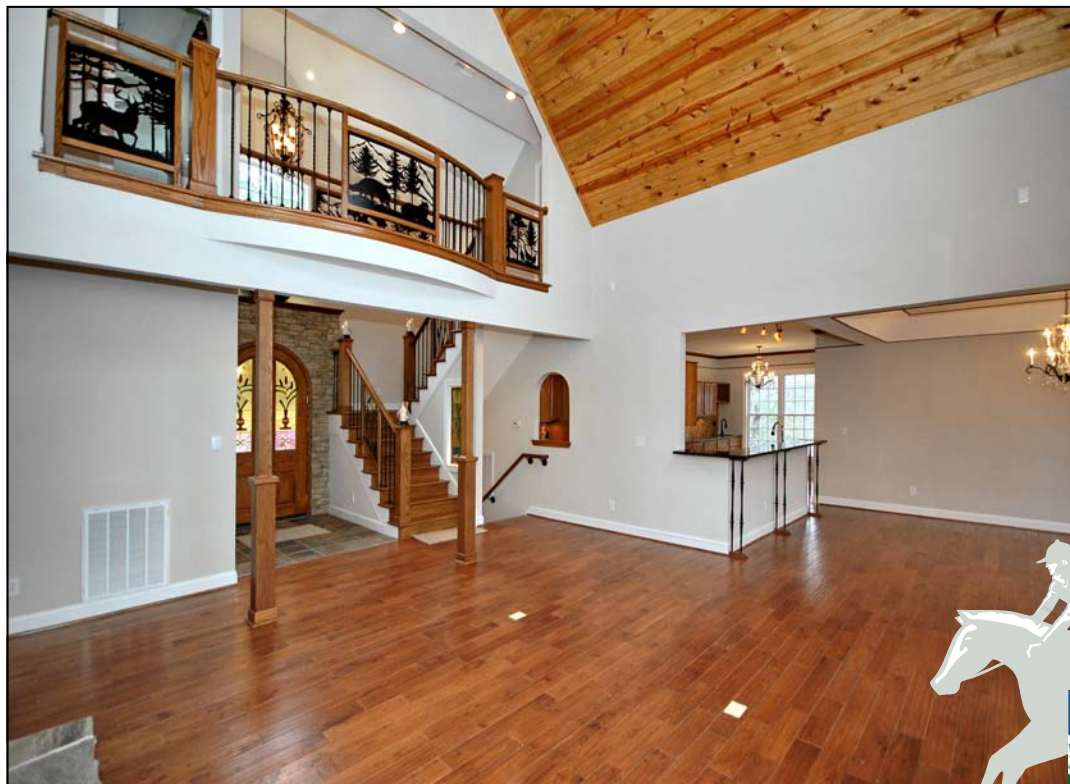
You'll be entranced with this custom 2008 arts and crafts style home on 4.06 acres in desirable Foxwood Hills. The handsome new construction residence boasts an open floor plan and vaulted ceilings plus top of the line finishes and fixtures. Notice the gleaming oak floors and stacked stone 2-story fireplace with see-through to the master suite. The bright kitchen features granite countertops, stainless appliances and sunny breakfast room with French doors. Enjoy private views from covered porches and open deck.



The Foyer: Enter the home through the handsome custom door with stained glass windows. This foyer is a light and airy entry with whimsical finishing touches and travertine tile.



Great Room: This grand space boasts hand hewn wide plank oak floors and 21-foot cathedral ceilings with tongue and groove pine wood panels. Notice the stacked stone floor to ceiling see-through fire place with custom built-in media cabinets. The room offers direct access to the covered porch through oversized French doors.





Kitchen: A delight for any chef, this custom kitchen features Mission style oak cabinets, inlaid tile floors, granite countertops and tile backsplash. Notice the stainless steel appliances and large prep area with vegetable sink. Enjoy the convenience of eat-in design and spacious walk-in pantry. Large windows bring in plenty of sunlight.



WWE
WALKER · WALLACE
& EMERSON
REALTY



Dining Room: This elegant dining area is enhanced by large bay windows and direct access to great room and kitchen. Notice the rich oak floors and handsome chandelier.

Lower Level: On the lower level, this bright family room with fireplace and built-in entertainment center features French door walk-out to the patio deck. Additional office area, storage space and full bathroom make this level ideal for private teen territory or guest quarters.

Spa: Also on the lower level, the workout room and spa features an ATHASE spa system. This is a complete sauna, steam, and detoxification system with sound and video.





Master Bedroom: Located on the main level, the spacious master bedroom features a distinguished tray ceiling, oak floors, see-through fireplace and French doors for direct balcony access.

Master Bath: In the master bath, you'll enjoy the large tiled European style shower with multiple showerhead arrangement. By the window, there's a delightful claw foot tub. The bath also includes dual vanity sinks, lighted makeup mirror, large walk-in master closet and additional linen closet. The room is wired for surround sound speakers and includes an alarm control panel





Upper Level: On the second level, you'll find guest suites with their respective baths. One bath features a shower arrangement and natural sky lighting and the other has a tub/shower arrangement. The additional bonus room is perfect for a home office or craft room.



Summary of Features

The Residence

New construction
Built 2008
3 Bedrooms; 5 baths; 1 half bath (3 bedroom septic permit)
Custom designed Donald Gardner Art and Crafts style home
Open floor plan
Private setting with acreage
Built with low maintenance materials for Lock-n-Go capabilities
Fully wired for cat 5 capability and entertainment system
Security system installed
Double car oversized garage
E trek decking material
Ceiling fans throughout

The Interiors

Rough hewn dark oak floors
Tennessee Stacked stone fire place
Custom hand rails and iron spindles
Granite countertops throughout
High end plumbing fixtures and sink vessels
Inlay centerpiece in tiled kitchen floor
Stain glass entry doors
Stainless steel appliances
Large walk in pantry

21-foot ceilings in great room
Exercise room with custom detox spa treatment center
Personalized appointments throughout the home

The Property

4.06 private acres with walking trails and creek
Low maintenance yard with native plants and grasses
Access through the upscale community of Fox Wood Hill Estates
10 minutes from downtown and Interstate 26
Located in Tryon, North Carolina near shopping, dining, and many recreational venues





The Residence: Offering 3600+ square feet of living space, this custom home features top of the line products and amenities. Designed by Donald Gardner, a featured designer of homes in The Cliffs communities, the residence features HardiePlank exterior siding and natural stone for efficiency and ease of maintenance. Set on a luxurious 4-acre homesite, the residence includes 3 bedrooms, 5 full baths (3 BR septic permit) and 1 half bath.

The Area: This beautiful custom home is located in the Fox Wood Hills, a private community with protective covenants and upscale homes. The greater Tryon area offers a wealth of dining and shopping options plus numerous activities ranging from equestrian venues and golf to tennis, fishing, hiking and whitewater adventures. Exciting area attractions include Lake Lure, Chimney Rock State Park, Pisgah National Forest, the Blue Ridge Parkway and the area's celebrated grape vineyards. Known as the Thermal Belt, the foothills region boasts four glorious seasons with moderate temperatures

Offered at \$549,000.

For additional information about
This property

Please contact :

Ron Piccari

828-606-7441

800-442-4749 ext 115

ron.piccari@wweRealty.com



Walker, Wallace & Emerson Realty

400 East Rutherford Street Suite 100

Landrum, South Carolina 29356

Please visit us on the web:

wweRealty.com